

WELLINGTON RIDGE

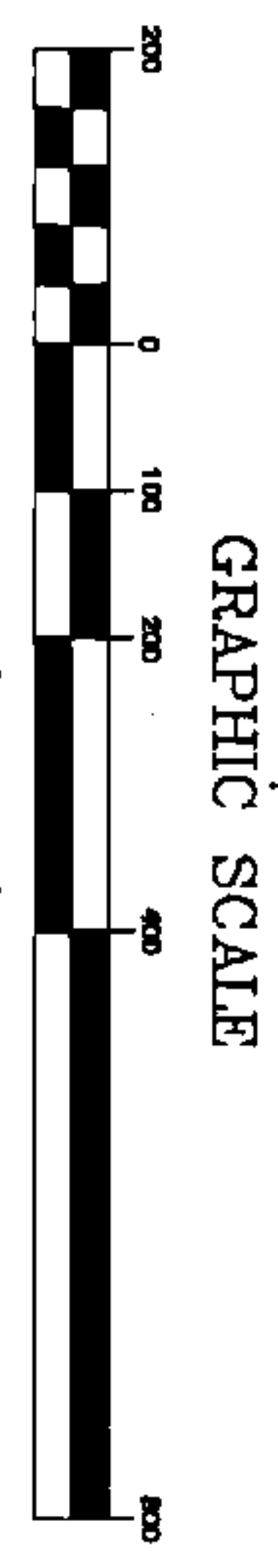
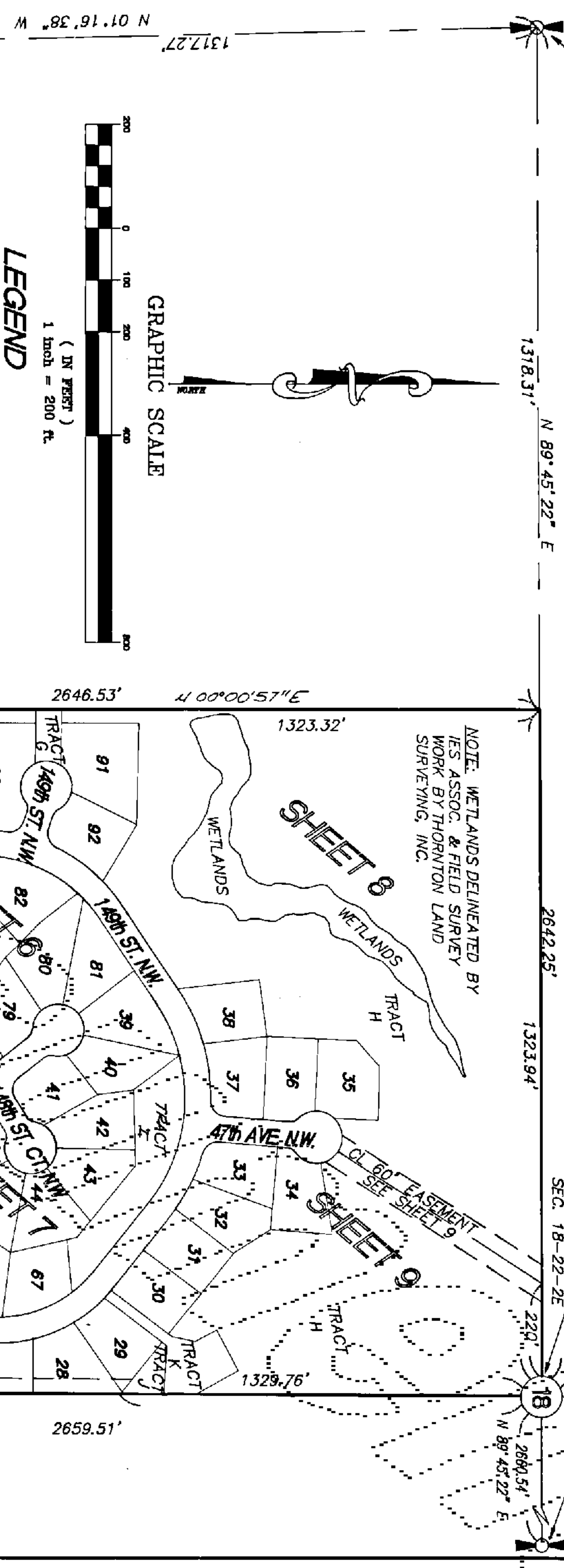
SHEET 1 OF 10

N THE NE 1/4 OF THE SW 1/4 AND THE SE 1/4 OF THE SW 1/4 OF SECTION 18,
TOWNSHIP 22 NORTH, RANGE 2 EAST OF THE
WILAMETTE MERIDIAN, PIERCE COUNTY, WASHINGTON

FND. 2" IRON ROD
W/HOLE IN CTR.
N. 1/4 COR. SEC. 18-22-2E
6/8/89

FND. 2" IRON PIPE
W/HUB & TACK
N. 1/4 COR. SEC. 18-22-2E
1/24/85

FND. BRASSIE IN CONC.
E. 1/4 COR. SEC. 18-22-2E
6/8/89



LEGEND
● STANDARD PIERCE COUNTY HOLLOWAY SET
BASIS OF BEARING = ASSUMED
INSTRUMENT USED = 1" TOTAL STATION

NOTES

- ALL LOTS MUST ACCESS OFF OF INTERNAL PLAT ROADS.
- DEVELOPMENT WITHIN ONE HUNDRED (100) FEET OF THE WETLAND BOUNDARIES SHOWN ON THIS FINAL PLAT MAY REQUIRE MITIGATION IN ACCORDANCE WITH PIERCE COUNTY ORDINANCE 86-109 GRADING, FILLING, AND CLEARING ORDINANCE AND THE PIERCE COUNTY WETLAND POLICIES.
- PURCHASERS OF LOTS WITHIN THIS FINAL PLAT ARE ADVISED OF AN INACTIVE SOLID WASTE LANDFILL/ACTIVE RECLAMATION-TRANSFER STATION IN THE VICINITY. PURCHASERS ARE ENCOURAGED TO CONTACT PIERCE COUNTY PLANNING AND LAND SERVICES DEPARTMENT AND OTHER PERMITTING AGENCIES REGARDING POTENTIAL IMPACTS ASSOCIATED WITH RECLAMATION OPERATIONS.
- THE USE AND DEVELOPMENT OF THE LOTS CONTAINED WITHIN THIS SUBDIVISION ARE APPROVED FOR SINGLE-FAMILY USE WHICH SHALL BE BINDING UPON THE PROPERTY FOR THE FULL TERM OF THE PRELIMINARY PLAT APPROVAL AND FOR A PERIOD OF FIVE YEARS FROM THE DATE OF RECORDING OF THE FINAL PLAT FOR THIS SUBDIVISION.
- LOTS WILL BE SUBJECT TO AN OPEN SPACE SCREENING EASEMENT ADJACENT TO SAID LOTS AS SHOWN.
- OPEN SPACE TRACTS ARE TO REMAIN IN THEIR NATURAL STATE FOR SCREENING, BUFFERING, DRAINAGE, DRAINFIELDS, AND UTILITIES PURPOSES. SELECT CUT ONLY; NO BUILDING ALLOWED. SAID OPEN SPACE AREAS MAY BE DEVELOPED ONLY IN ACCORDANCE WITH THE REQUIREMENTS OF THE DEVELOPMENT REGULATIONS FOR THE BIG HARBOR PENINSULA.
- PRIOR TO GRADING, FILLING, CLEARING OR CREATION OF IMPERVIOUS SURFACES, THE OWNER/DEVELOPER SHALL COMPLY WITH THE PIERCE COUNTY SITE DEVELOPMENT ORDINANCE (NO. 90-132) OR MOST CURRENT VERSION THEREOF.
- DOWNPOUTS FOR ALL LOTS SHALL BE DIRECTED TO THE STORM DRAINAGE SYSTEM.
- NO BUILDING PERMITS WILL BE ISSUED UNTIL SUCH TIME AS FIRE FLOW REQUIREMENTS HAVE BEEN MET.

144th STREET N.W.

TRACTS B,C,F, & K ARE DEDICATED TO PIERCE COUNTY FOR STORM DRAINAGE PURPOSES.
TRACTS A,D,E,H,I & J ARE TO BE DEEDED TO THE WELLINGTON RIDGE HOMEOWNERS ASSOCIATION - AS OPEN SPACE. SEE NOTE 6.
TRACT G IS TO BE DEEDED TO TUCO & SONS, INC.

NOTE: WETLANDS LOCATED BY THORNTON LAND SURVEYING.

CURVE TABLE

CURVE	RADIUS	LENGTH	DELTA
CA	30.00'	37.72'	72.01.59°

SURVEYOR'S CERTIFICATE

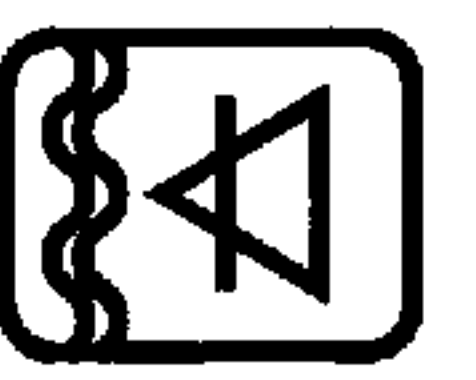
I HEREBY CERTIFY THAT THIS PLAT OF WELLINGTON RIDGE IS BASED ON AN ACTUAL SURVEY DONE BY ME OR UNDER MY DIRECT SUPERVISION; THAT THE BEARINGS, AND DISTANCES ARE SHOWN CORRECTLY; THAT THE PERIMETER MONUMENTS HAVE BEEN SET AND THAT ALL OTHER MONUMENTS AND LOT CORNERS HAVE BEEN SET OR BONDED WITH THE COUNTY AND WILL BE SET PRIOR TO THE RELEASE OF THE BOND; THAT I HAVE COMPLIED WITH ALL STATE AND COUNTY REGULATIONS GOVERNING PLATTING AND THAT IT CONFORMS TO THE APPROVED PRELIMINARY PLAT AND THE CONDITIONS THEREOF.

M.F. Garland
M.F. GARLAND L.S. NO. 18902
DATE 12/4/91



EASEMENT PROVISIONS
AN EASEMENT IS HEREBY RESERVED FOR AND GRANTED TO
SILVER RIM ASSOCIATES
PENINSULA POWER AND LIGHT CO.
HARBOR WATER CO.
WASHINGTON NATURAL GAS
VIACOM CABLEVISION
TELEPHONE UTILITIES OF WASHINGTON

AND THEIR RESPECTIVE SUCCESSORS AND ASSIGNS UNDER AND UPON THE EXTERIOR 10 FEET OF THE FRONT AND REAR BOUNDARY LINES AND UNDER AND UPON THE EXTERIOR 5 FEET OF SIDE BOUNDARY LINES OF ALL LOTS, IN WHICH TO INSTALL, LAY, CONSTRUCT, RENEW, OPERATE AND MAINTAIN UNDERGROUND CONDUITS, CABLES AND WIRES WITH NECESSARY FACILITIES AND OTHER PROPERTY WITH THE ABOVE NAMED UTILITY SERVICES, TOGETHER WITH THE RIGHT TO ENTER UPON THE LOTS AT ALL TIMES FOR THE PURPOSES STATED. ALL PERMANENT UTILITY SERVICES SHALL BE PROVIDED BY UNDERGROUND SERVICE EXCLUSIVELY.



PAC-TECH ENGINEERING, INC.
Engineers / Planners / Surveyors
243-7112 KING COUNTY
6100 Southcenter Blvd Tacoma, WA 98409
Fax # 243-7108
473-4491 TACOMA
2801 South 35th Tacoma, WA 98409
Fax # 474-5871
377-2033 BREWSTER
3721 Kirkup Way Bremerton, WA 98312
Fax # 377-2283

9203050191

BR0152P62871

Original

WELLINGTON RIDGE

SHEET 2 OF 10

LINE TABLE

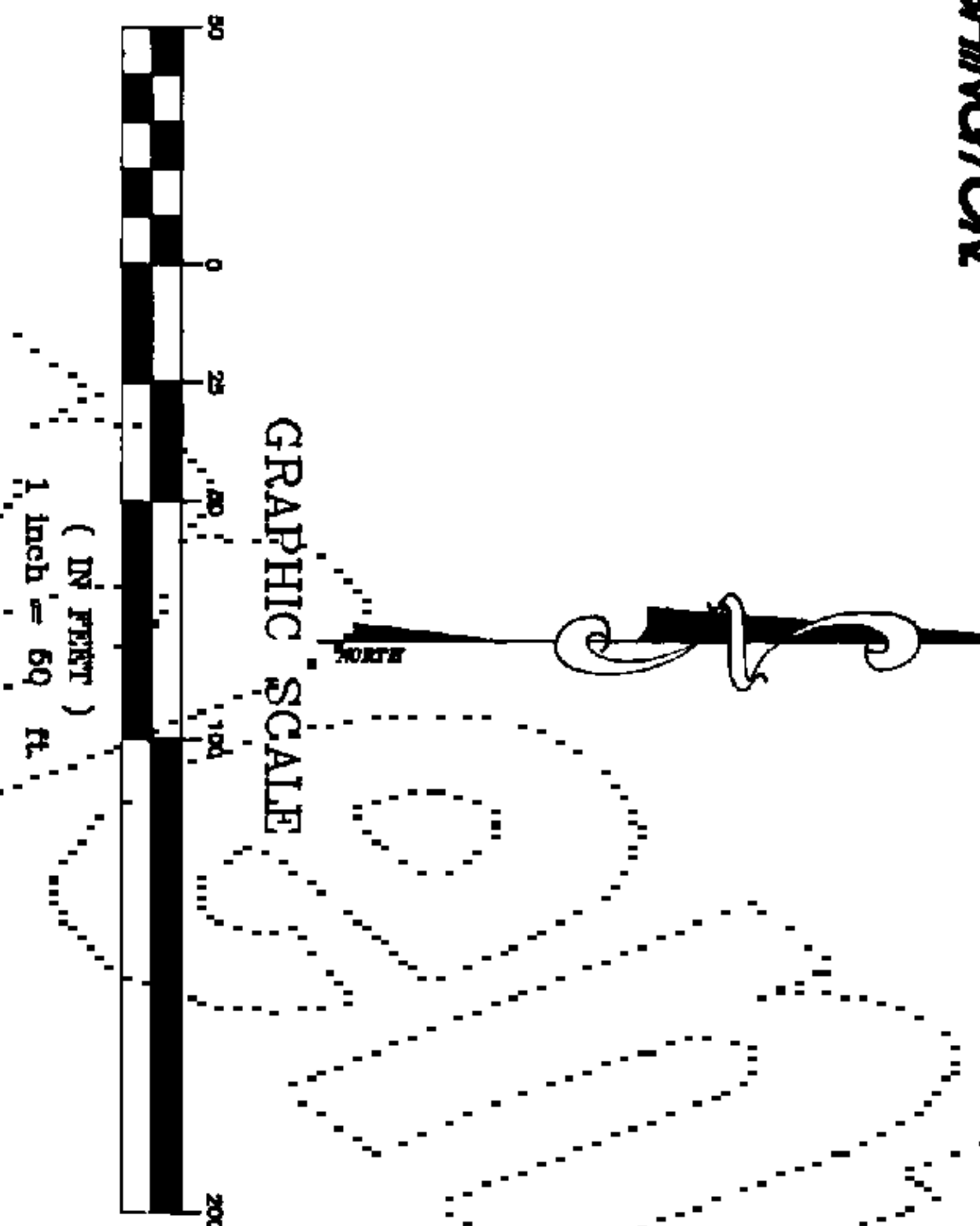
LINE	DIRECTION	DISTANCE
L3	S 00° 05' 03" W	30.00'
L4	S 00° 09' 08" W	40.00'
L5	S 00° 05' 03" W	10.00'
L6	S 00° 05' 03" W	25.00'
L31	S 00° 09' 08" W	24.12'
L62	N 12° 46' 26" W	41.62'
L63	N 00° 49' 57" E	40.11'

N THE NE 1/4 OF THE SW 1/4 AND THE SE 1/4 OF THE SW 1/4 OF SECTION 18, TOWNSHIP 22 NORTH, RANGE 2 EAST OF THE WILLAMETTE MERIDIAN, PIERCE COUNTY, WASHINGTON

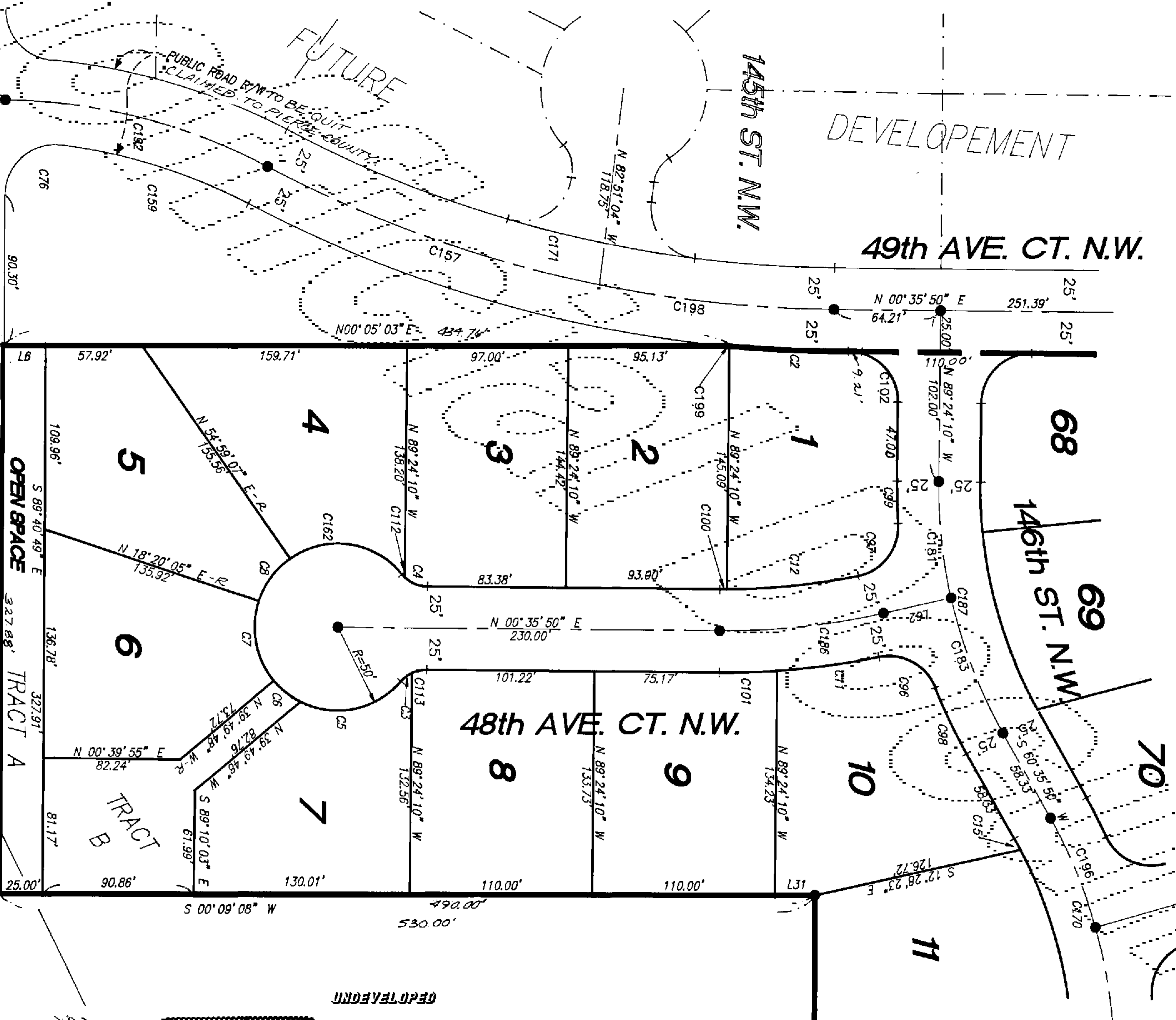
CURVE TABLE

CURVE	RADIUS	LENGTH	DELTA	CURVE	RADIUS	LENGTH	DELTA
C2	775.00'	6.3 00'	04° 58' 50"	C102	30.00'	4.7 12'	92° 02' 00"
C3	20.00'	8.36'	23° 56' 28"	C112	20.00'	2.48'	07° 05' 26"
C4	20.00'	14.88'	42° 54' 15"	C113	20.00'	9.08'	26° 03' 14"
C5	50.00'	66.31'	75° 59' 22"	C157	750.00'	212.72'	16° 15' 01"
C6	50.00'	20.58'	23° 34' 44"	C159	325.00'	20° 58' 12"	82° 58' 25"
C7	50.00'	30.78'	38° 09' 33"	C162	300.00'	14.71'	85° 36' 25"
C8	50.00'	36.39'	36° 39' 02"	C170	300.00'	24° 57' 47"	130° 07' 15"
C11	451.56'	61.97'	07° 51' 47"	C171	355.01'	27° 07' 15"	135° 22' 16"
C12	401.56'	79.67'	11° 24' 00"	C181	300.00'	70.01'	13° 22' 16"
C15	275.00'	7.55'	01° 34' 21"	C183	300.00'	87.07'	16° 57' 44"
C16	30.00'	50.49'	96° 25' 42"	C186	428.56'	99.55'	13° 22' 16"
C17	30.00'	41.90'	80° 01' 04"	C187	300.00'	157.05'	30° 00' 00"
C18	30.00'	80.01'	82° 28' 08"	C188	300.00'	164.23'	26° 53' 08"
C19	325.00'	43.85'	07° 43' 48"	C189	300.00'	70.71'	13° 50' 13"
C198	325.00'	25.18'	04° 28' 25"	C199	750.00'	142.29'	10° 52' 14"
C199	401.56'	4.00'	00° 34' 15"	C199	775.00'	1.88'	00° 08' 21"
C101	451.56'	34.87'	04° 25' 28"				

SEE SHEET 4 OF 10



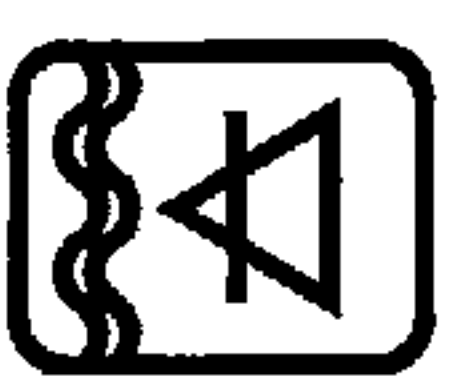
SEE SHEET 3 OF 10



10' R/W TO BE QUIT CLAIMED TO PIERCE COUNTY

SEE SHEET 1 OF 10 FOR LEGEND AND SECTION BREAKDOWN

144th STREET N.W.



PAC-TECH ENGINEERING, INC.
Engineers / Planners / Surveyors

9203050191

243-7112
RING COUNTY
8100 Southwester Blvd
Spokane, WA 99218
FAX # 243-7109

473-4491
TACOMA
2801 South 25th
Tacoma, WA 98409
FAX # 473-8871

377-9025
BREMERTON
5721 Kildurg Way
Bremerton, WA 98312
FAX # 377-2283

BK0752Pg2878

Original

JOB NO 15733

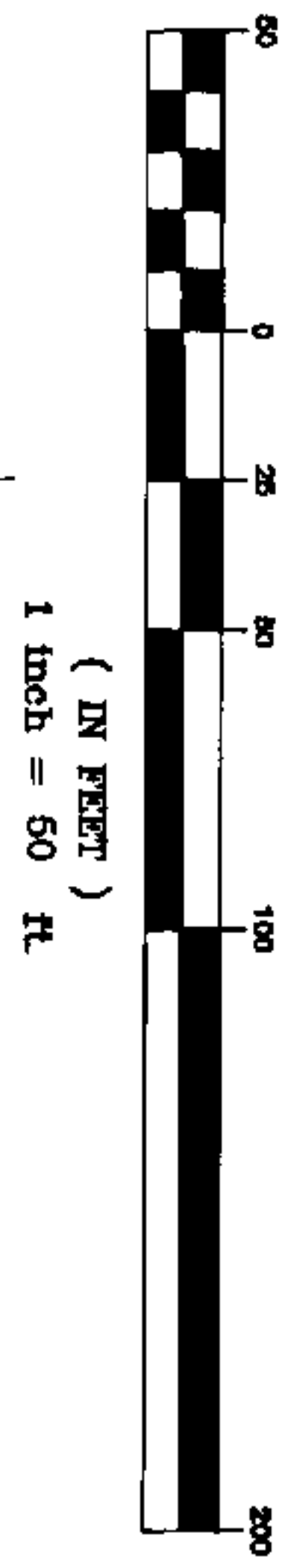
WELLINGTON RIDGE

SHEET 3 OF 10

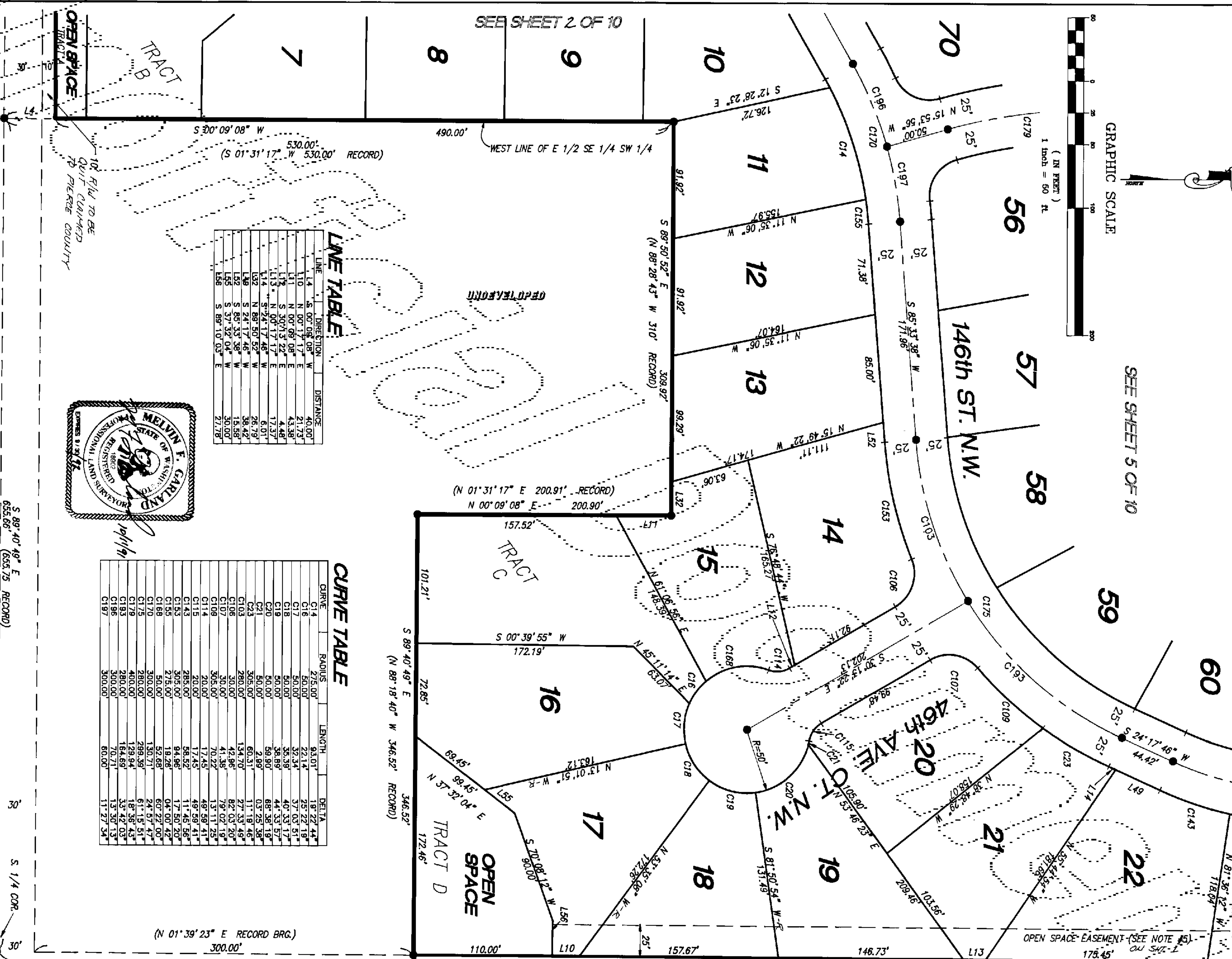
N THE NE 1/4 OF THE SW 1/4 AND THE SE 1/4 OF THE SW 1/4 OF SECTION 8,
TOWNSHIP 22 NORTH, RANGE 2 EAST OF THE
WILLAMETTE MERIDIAN, PERCE COUNTY, WASHINGTON



GRAPHIC SCALE



SEE SHEET 5 OF 10



SEE SHEET 2 OF 10

WEST LINE OF E 1/2 SE 1/4 SW 1/4
(S 01° 31' 17" W 530.00' RECORD)

(N 01° 31' 17" E 200.91' RECORD)
(N 00° 09' 08" E 200.90')

(N 01° 39' 23" E RECORD BRG.)
300.00'

LINE TABLE

LINE	DIRECTION	DISTANCE
L4	S 00° 09' 08" W	40.00'
L10	N 00° 17' 17" E	21.73'
L11	N 00° 06' 08" E	43.38'
L12	S 30° 13' 22" E	4.48'
L13	N 00° 17' 17" E	17.37'
L14	S 72° 17' 46" W	6.01'
L32	N 88° 50' 52" W	26.79'
L39	S 24° 17' 46" W	38.42'
L52	S 85° 33' 38" W	15.58'
L55	S 37° 32' 04" W	30.00'
L56	S 89° 10' 03" E	27.78'

CURVE TABLE

CURVE	RADIUS	LENGTH	DELTA
C14	275.00'	93.01'	18° 22' 44"
C16	50.00'	22.14'	25° 22' 18"
C17	50.00'	32.34'	37° 03' 51"
C18	50.00'	35.39'	40° 33' 17"
C19	50.00'	38.89'	44° 33' 57"
C20	50.00'	59.90'	88° 38' 19"
C21	50.00'	2.86'	03° 25' 38"
C23	305.00'	60.37'	11° 18' 46"
C103	280.00'	134.70'	27° 33' 49"
C106	30.00'	42.86'	82° 03' 20"
C107	305.00'	41.38'	79° 02' 19"
C114	20.00'	70.22'	13° 11' 25"
C115	20.00'	17.45'	49° 59' 41"
C143	285.00'	17.45'	49° 59' 41"
C153	305.00'	58.52'	11° 45' 56"
C155	275.00'	94.96'	17° 50' 20"
C168	275.00'	18.26'	04° 00' 42"
C170	300.00'	52.68'	60° 22' 00"
C175	300.00'	130.71'	24° 57' 47"
C179	280.00'	289.36'	61° 15' 51"
C183	400.00'	129.94'	18° 36' 43"
C185	280.00'	184.69'	33° 42' 03"
C196	300.00'	70.71'	13° 30' 13"
C197	300.00'	80.00'	11° 27' 34"



S 89° 40' 49" E
655.66' (655.75 RECORD)

S 1/4 COR.

SEE SHEET 1 OF 10 FOR LEGEND
AND SECTION BREAKDOWN

144th STREET N.W.



PAC-TECH ENGINEERING, INC.
Engineers / Planners / Surveyors

245-7112
1000 Southdowner Blvd
Suite 100
Seattle, WA 98148
FAX # 245-7109

475-4481
2801 South 35th
Suite 200
Tacoma, WA 98409
FAX # 475-8871

377-2835
8700 1st Avenue
Suite 4
Bremerton, WA 98312
FAX # 377-2835

9203050191

JOB NO. 15733

BR0752P62879

Original

WELLINGTON RIDGE

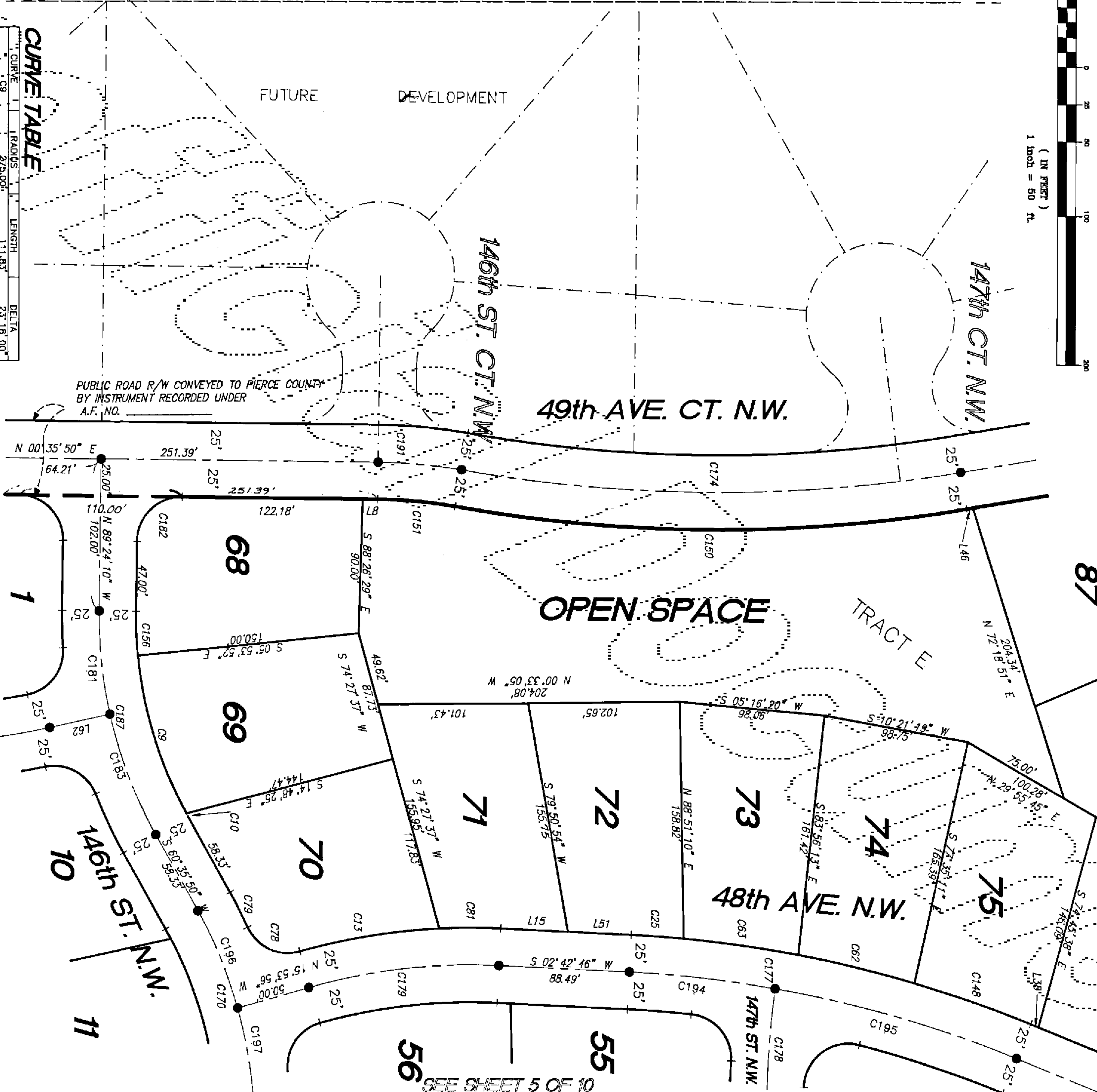
SHEET 4 OF 10

IN THE NE 1/4 OF THE SW 1/4 AND THE SE 1/4 OF THE SW 1/4 OF SECTION 18,
TOWNSHIP 22 NORTH, RANGE 2 EAST OF THE
WILLAMETTE MERIDIAN, PIERCE COUNTY, WASHINGTON

SEE SHEET 1 OF 10 FOR LEGEND
AND SECTION BREAKDOWN



SEE SHEET 6 OF 10



PUBLIC ROAD R/W CONVEYED TO PIERCE COUNTY
BY INSTRUMENT RECORDED UNDER
A.F. NO.

CURVE TABLE

CURVE	RADIUS	LENGTH	DELTA
C129	275.00'	111.83'	23.18 00°
C130	275.00'	2.14'	00.26 47°
C131	425.00'	95.77'	12.54 38°
C132	825.00'	35.56'	02.28 11°
C133	825.00'	80.88'	05.37 01°
C134	825.00'	78.18'	05.25 49°
C135	30.00'	42.41'	80.59 51°
C136	325.00'	26.04'	04.35 28°
C137	425.00'	41.62'	09.38 41°
C138	825.00'	83.24'	09.48 52°
C139	1025.00'	347.58'	18.25 47°
C140	325.00'	52.74'	09.17 54°
C141	300.00'	30.01'	06.15 13°
C142	300.00'	24.57 47°	
C143	1000.00'	339.11'	19.25 47°
C144	800.00'	289.45'	18.17 54°
C145	582.62'	88.27'	08.40 49°
C146	400.00'	129.94'	18.36 43°
C147	300.00'	70.01'	13.22 16°
C148	300.00'	47.12'	09.00 02°
C149	300.00'	87.07'	16.37 44°
C150	300.00'	157.08'	30.00 00°
C151	350.00'	56.80'	09.17 54°
C152	800.00'	99.13'	07.05 59°
C153	800.00'	170.32'	12.11 54°
C154	300.00'	70.27'	13.30 13°
C155	300.00'	60.00'	11.27 34°

SEE SHEET 2 OF 10

SEE SHEET 5 OF 10

LINE TABLE

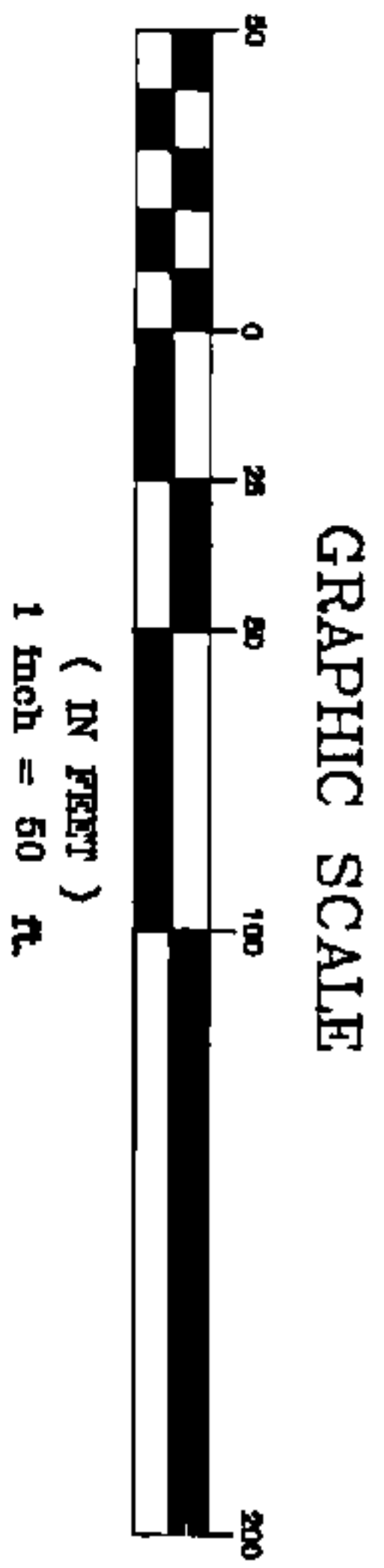
LINE	DIRECTION	DISTANCE
L8	N 00° 35' 50" E	10.00'
L15	S 02° 42' 46" W	45.51'
L38	N 22° 00' 40" E	5.87'
L46	N 08° 32' 03" W	4.30'
L51	S 02° 42' 46" W	42.98'
L62	N 12° 46' 26" W	41.62'



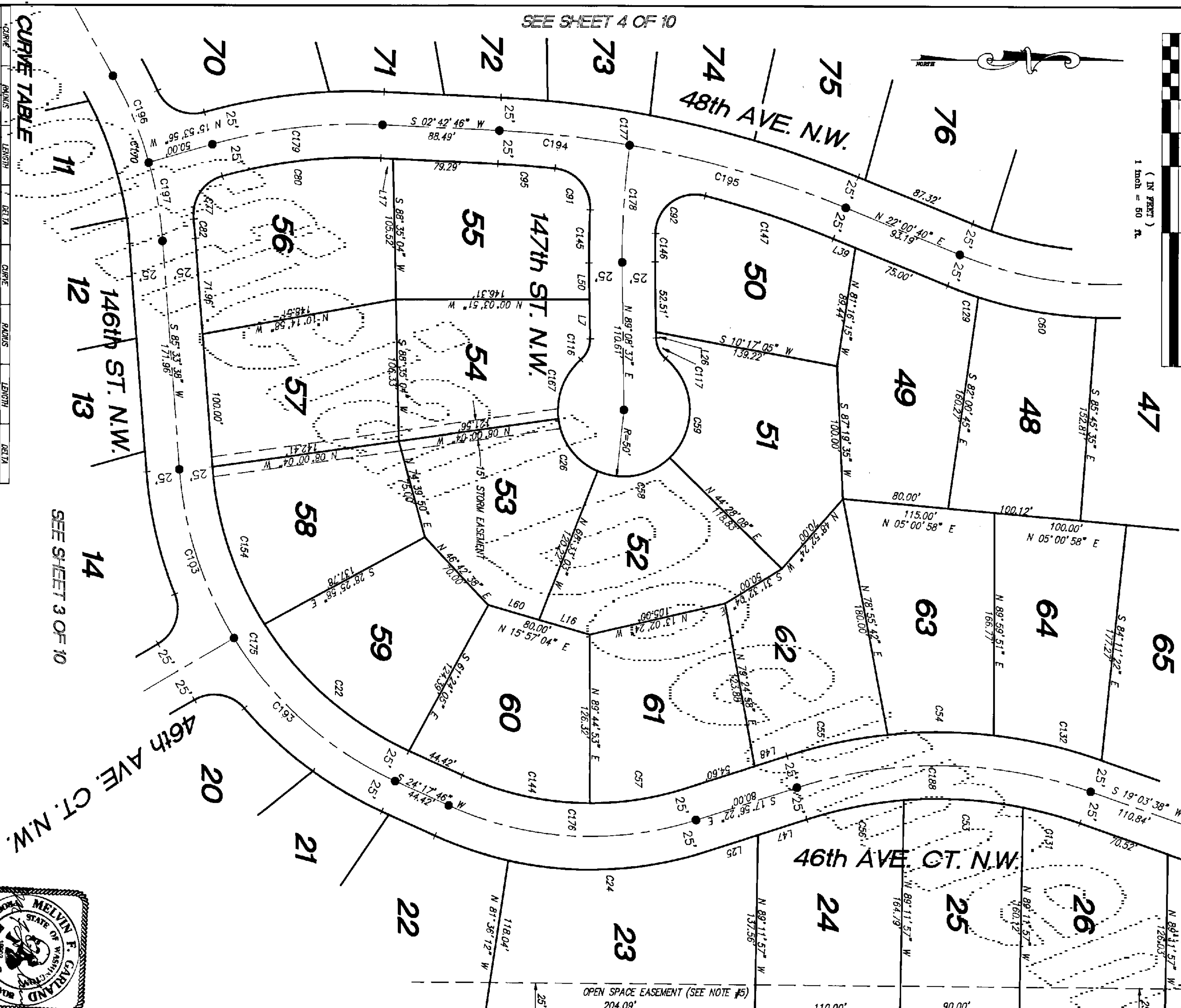
PAC-TECH ENGINEERING, INC.
Engineers / Planners / Surveyors

243-7112 KING COUNTY 475-4481 TACOMA 377-2055
6100 Southcenter Blvd 2801 South 35th 3721 Kibbey Way
Seattle, WA 98148 475-4488 377-2055
FAX # 243-7109 FAX # 475-5971 FAX # 377-2293

N THE NE 1/4 OF THE SW 1/4 AND THE SE 1/4 OF THE SW 1/4 OF SECTION 18,
TOWNSHIP 22 NORTH, RANGE 2 EAST OF THE
WILLAMETTE MERIDIAN, PERCE COUNTY, WASHINGTON



SEE SHEET 7 OF 10



SEE SHEET 4 OF 10

CURVE TABLE

CURVE	RADIUS	LENGTH	DELTA	CURVE	RADIUS	LENGTH	DELTA
C194	655.00'	146.79'	32.58° 54'	C197	325.00'	44.45'	07.50° 08'
C195	285.00'	191.56'	30.28° 12'	C198	375.00'	83.87'	12.46° 42'
C196	50.00'	64.68'	59.10° 07'	C199	235.00'	89.49'	24.15° 23'
C197	285.00'	90.17'	15.55° 57'	C200	807.62'	39.64'	02.44° 16'
C198	313.00'	80.15'	12.14° 47'	C201	357.62'	21.45'	02.12° 13'
C199	313.00'	78.14'	11.56° 21'	C202	775.00'	102.10'	07.32° 54'
C200	285.00'	73.06'	10.31° 55'	C203	285.00'	126.87'	28.16° 57'
C201	235.00'	73.74'	17.58° 45'	C204	50.00'	49.57'	56.48° 08'
C202	50.00'	67.29° 25'	96.31° 42'	C205	300.00'	130.71'	24.57° 47'
C203	50.00'	84.24'	96.31° 42'	C206	280.00'	289.39'	61.15° 51'
C204	325.00'	90.33'	15.55° 28'	C207	280.00'	191.66'	42.14° 06'
C205	307.00'	42.37'	81.72° 20'	C208	800.00'	282.43'	19.11° 54'
C206	303.00'	121.04'	18.28° 38'	C209	382.62'	88.27'	09.40° 49'
C207	303.00'	174.44'	02.32° 48'	C210	400.00'	128.94'	18.36° 43'
C208	30.00'	45.54'	85.58° 13'	C211	350.00'	226.02'	37.00° 00'
C209	30.00'	45.54'	85.58° 13'	C212	280.00'	164.69'	33.42° 03'
C210	30.00'	45.54'	85.58° 13'	C213	280.00'	164.69'	33.42° 03'
C211	30.00'	45.54'	85.58° 13'	C214	280.00'	164.69'	33.42° 03'
C212	30.00'	45.54'	85.58° 13'	C215	280.00'	164.69'	33.42° 03'
C213	30.00'	45.54'	85.58° 13'	C216	280.00'	164.69'	33.42° 03'
C214	30.00'	45.54'	85.58° 13'	C217	280.00'	164.69'	33.42° 03'
C215	30.00'	45.54'	85.58° 13'	C218	280.00'	164.69'	33.42° 03'
C216	30.00'	45.54'	85.58° 13'	C219	280.00'	164.69'	33.42° 03'
C217	30.00'	45.54'	85.58° 13'	C220	280.00'	164.69'	33.42° 03'
C218	30.00'	45.54'	85.58° 13'	C221	280.00'	164.69'	33.42° 03'
C219	30.00'	45.54'	85.58° 13'	C222	280.00'	164.69'	33.42° 03'

LINE TABLE

LINE	DIRECTION	DISTANCE
L7	N 89° 09' 37" E	28.64'
L16	N 15° 57' 04" E	40.00'
L17	S 02° 42' 46" W	8.20'
L25	S 17° 56' 22" E	41.16'
L26	N 89° 09' 37" E	18.19'
L39	N 22° 00' 40" E	36.84'
L47	S 17° 56' 22" E	23.40'
L48	S 17° 56' 22" E	27.55'
L49	N 89° 09' 37" E	40.00'
L60	N 15° 57' 04" E	40.00'

SEE SHEET 3 OF 10



PAC-TECH ENGINEERING, INC.
Engineers / Planners / Surveyors

243-7112
6100 Southshore Blvd
Seattle, WA 98148
Fax: 243-7108

473-4481
2801 South 35th
Tacoma, WA 98408
Fax: 473-0571

377-2053
3721 Klump Hwy
Burien, WA 98312
Fax: 377-2285

9203050191

JOB NO. 15733

BK0752PG2881

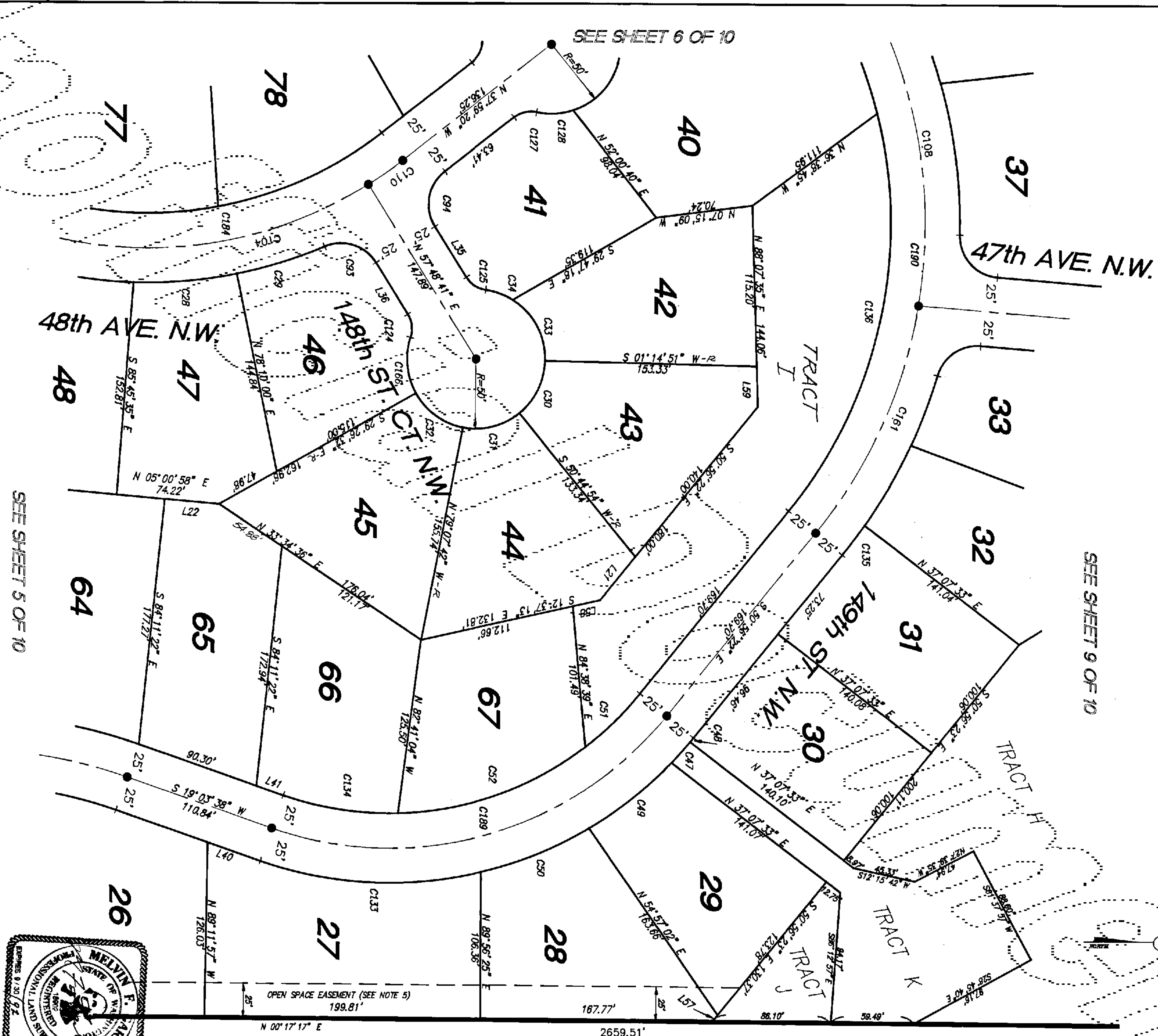
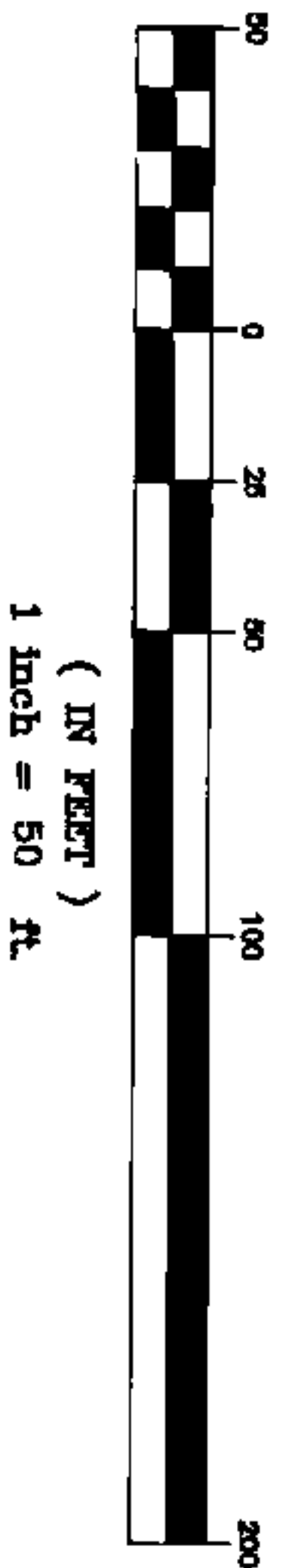
Original

WELLINGTON RIDGE

SHEET 7 OF 10

N THE NE 1/4 OF THE SW 1/4 AND THE SE 1/4 OF THE SW 1/4 OF SECTION 18,
TOWNSHIP 22 NORTH, RANGE 2 EAST OF THE
WILLAMETTE MERIDIAN, PERCE COUNTY, WASHINGTON

GRAPHIC SCALE



CURVE TABLE

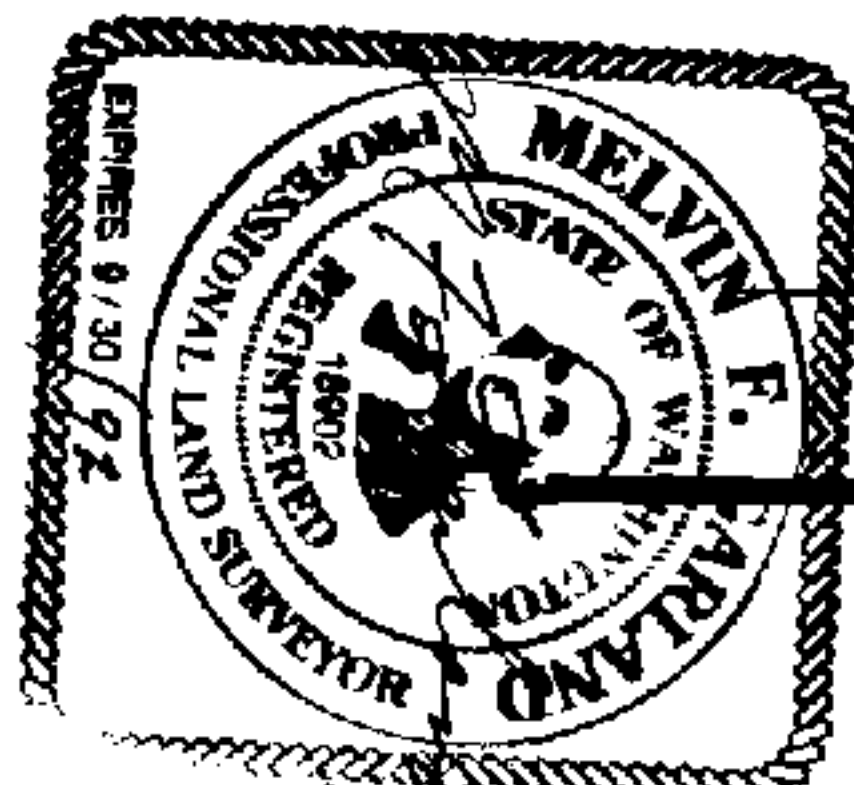
CURVE	RADIUS	LENGTH	DELTA	CURVE	RADIUS	LENGTH	DELTA
C128	233.00'	73.17'	15° 15' 05"	C108	300.00'	284.42'	43° 17' 12"
C29	233.00'	66.36'	11° 42' 09"	C110	300.00'	30.57'	05° 48' 01"
C30	50.00'	43.20'	49° 30' 03"	C124	20.00'	17.45'	49° 59' 41"
C31	50.00'	43.74'	50° 07' 23"	C125	20.00'	17.45'	49° 59' 41"
C32	50.00'	43.36'	49° 41' 10"	C127	20.00'	17.45'	49° 59' 41"
C33	50.00'	51.89'	59° 34' 38"	C128	50.00'	30.45'	30° 45' 28"
C34	20.00'	20.87'	23° 51' 14"	C133	283.79'	162.20'	32° 44' 46"
C35	283.79'	3.60'	00° 43' 38"	C134	283.79'	28.90'	04° 42' 19"
C36	283.79'	3.60'	00° 43' 38"	C135	378.00'	26.90'	04° 05' 42"
C37	283.79'	84.62'	15° 23' 24"	C136	303.55'	181.51'	29° 42' 48"
C38	283.79'	84.62'	15° 23' 24"	C137	300.00'	41.23'	47° 14' 54"
C39	233.79'	55.13'	15° 30' 35"	C138	300.00'	314.16'	60° 00' 00"
C40	233.79'	146.02'	35° 47' 05"	C139	298.79'	316.18'	70° 00' 00"
C41	30.00'	42.46'	81° 05' 14"	C180	300.00'	445.53'	73° 00' 00"
C42	30.00'	44.06'	84° 11' 54"				
C43	300.00'	283.79'	54° 11' 32"				

SEE SHEET 5 OF 10

LINE TABLE

LINE	DIRECTION	DISTANCE
L21	S 50° 56' 22" E	40.00'
L22	N 05° 00' 58" E	30.57'
L23	N 07° 48' 41" E	39.24'
L24	N 57° 48' 41" E	43.03'
L25	N 19° 01' 38" W	40.32'
L26	S 19° 01' 38" W	20.25'
L27	N 50° 56' 23" W	6.59'
L28	S 12° 37' 13" E	20.16'
L29	S 88° 07' 35" W	28.25'

SEE SHEET 1 OF 10 FOR LEGEND AND SECTION BREAKDOWN



PAC-TECH ENGINEERING, INC.
Engineers / Planners / Surveyors

243-2112
KING COUNTY
6100 Southcenter Blvd
Suite 100
Seattle, WA 98188
FAX # 243-7100

474-4491
TACOMA
2801 South 20th
Suite 200
Tacoma, WA 98409
FAX # 474-5871

377-2023
BREMENTON
3721 Kinsop Hwy
Suite 4
Bremerton, WA 98312
FAX # 377-2283

PUNINGOLA L.L. NO. 1448

Original

BK0752Pg2883

9203050191

JOB NO. 15733

WELLINGTON RIDGE

SHEET 8 OF 10

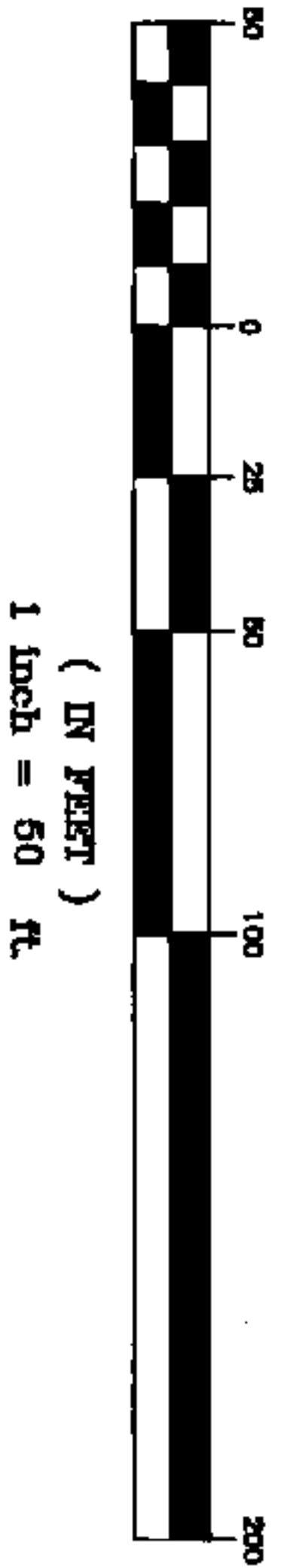
N THE NE 1/4 OF THE SW 1/4 AND THE SE 1/4 OF THE SW 1/4 OF SECTION 18,
TOWNSHIP 22 NORTH, RANGE 2 EAST OF THE
WILLAMETTE MERIDIAN, PERCE COUNTY, WASHINGTON

UNDEVELOPED

NW COR E 1/2 SW 1/4
SEC. 18, R. 22N, R. 2E, W.M.



GRAPHIC SCALE

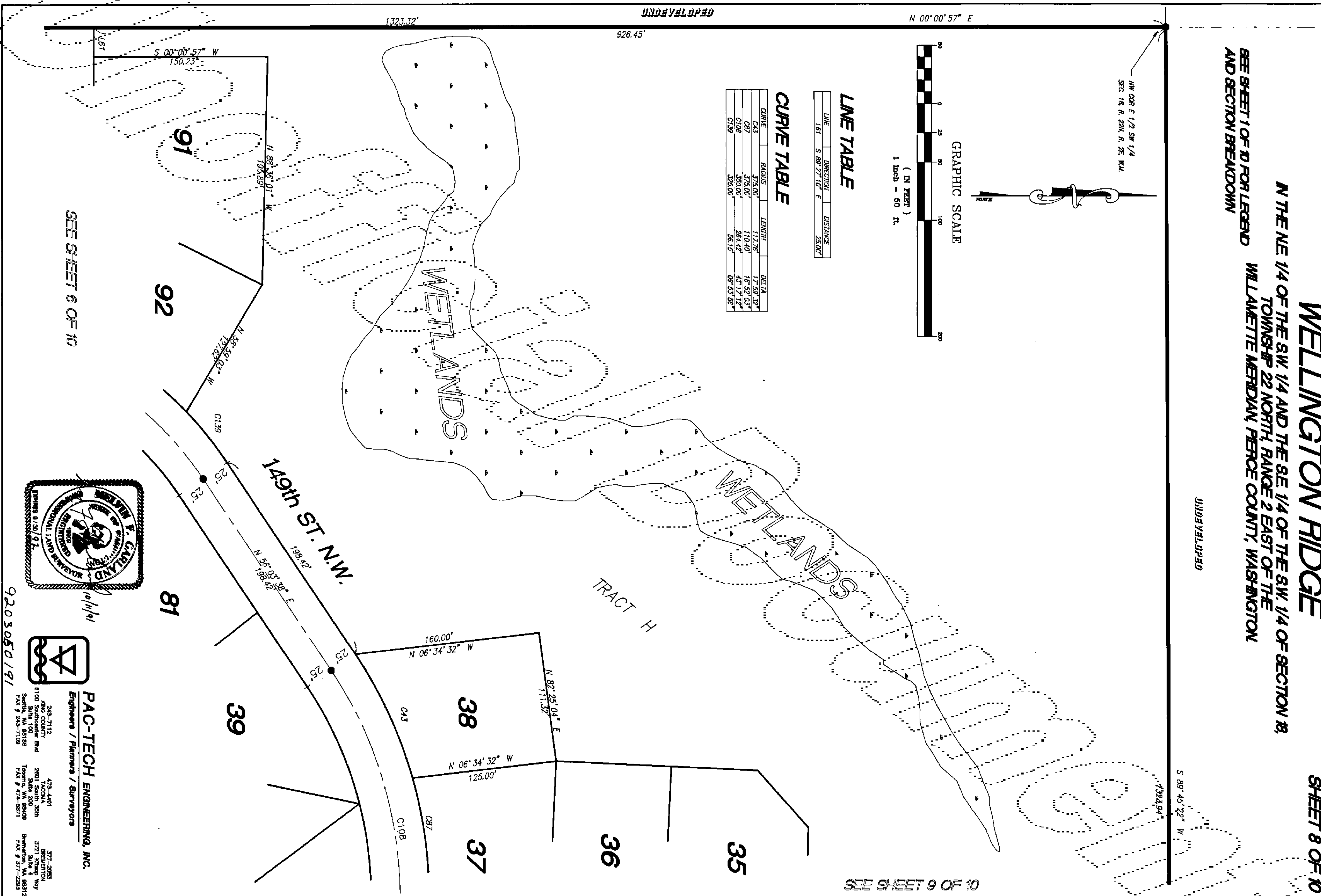


LINE TABLE

LINE	DIRECTION	DISTANCE
L61	S 89° 27' 10" E	25.00'

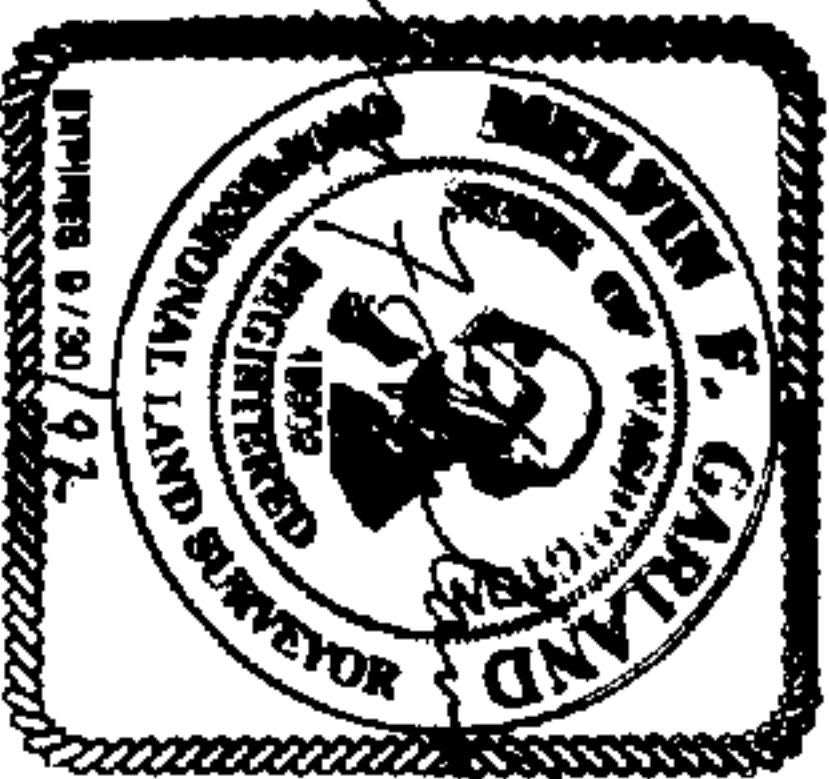
CURVE TABLE

CURVE	RADIUS	LENGTH	DELTA
C43	373.00'	117.76'	17° 58' 32"
C87	373.00'	110.40'	16° 52' 03"
C108	350.00'	284.42'	43° 17' 12"
C139	325.00'	56.15'	09° 53' 56"



SEE SHEET 9 OF 10

SEE SHEET 6 OF 10



PAC-TECH ENGINEERING, INC.

Engineers / Planners / Surveyors

245-7112 KING COUNTY
8100 Southcenter Blvd
Seattle, WA 98148
FAX # 245-7108

475-4481 TACOMA
2801 South 20th
Tacoma, WA 98409
FAX # 475-5871

577-2085 BREWERTON
3721 Kilduff Way
Brewerton, WA 98112
FAX # 577-2283

920 3050 191

WELLINGTON RIDGE

N THE NE 1/4 OF THE SW 1/4 AND THE SE 1/4 OF THE SW 1/4 OF SECTION 18,
TOWNSHIP 22 NORTH, RANGE 2 EAST OF THE
WILAMETTE MERIDIAN, PERCE COUNTY, WASHINGTON

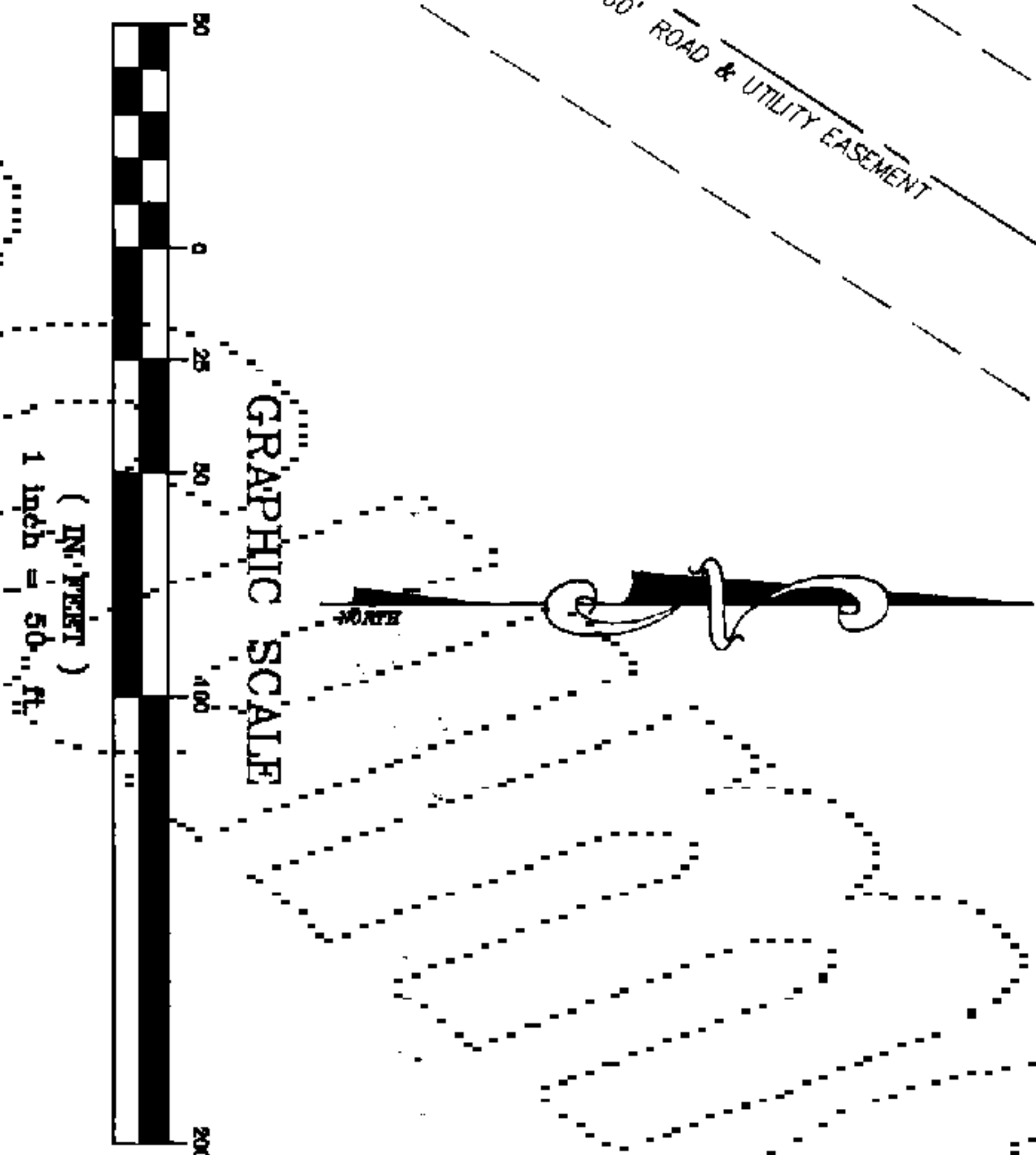
SHEET 9 OF 10

UNDEVELOPED

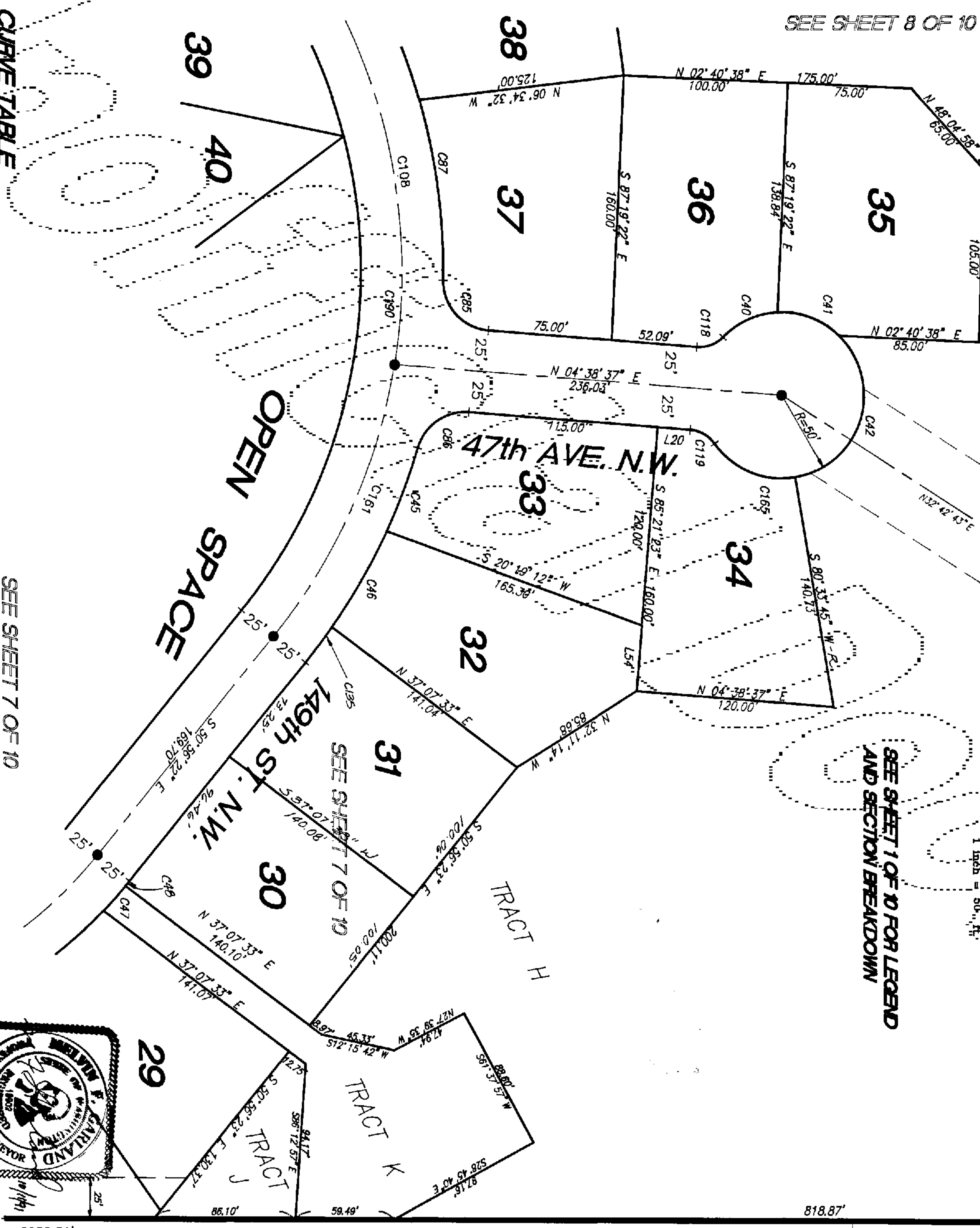
S 89° 45' 22" W
1323.94'

THE DEVELOPER OF THIS PLAN RESERVES THE RIGHT TO RELOCATE THIS EASEMENT WITHIN TRACT "H" AS NECESSARY TO PROVIDE ACCESS TO LAND NORTH OF WELLINGTON RIDGE. ADDITIONALLY THE DEVELOPER RESERVES THE RIGHT TO MAKE ALL NECESSARY SLOPES FOR CUTS AND FILLS UPON TRACT "H" IN CONJUNCTION WITH THE ORIGINAL REASONABLE GRADING OF THIS ROAD.

BASED ON AN EVALUATION OF EXISTING TOPOGRAPHIC FEATURES, THE ROAD LOCATION SHOWN HEREON IS BELIEVED TO APPROXIMATE THE FINAL DESIGNED & CONSTRUCTED LOCATION.



SEE SHEET 8 OF 10



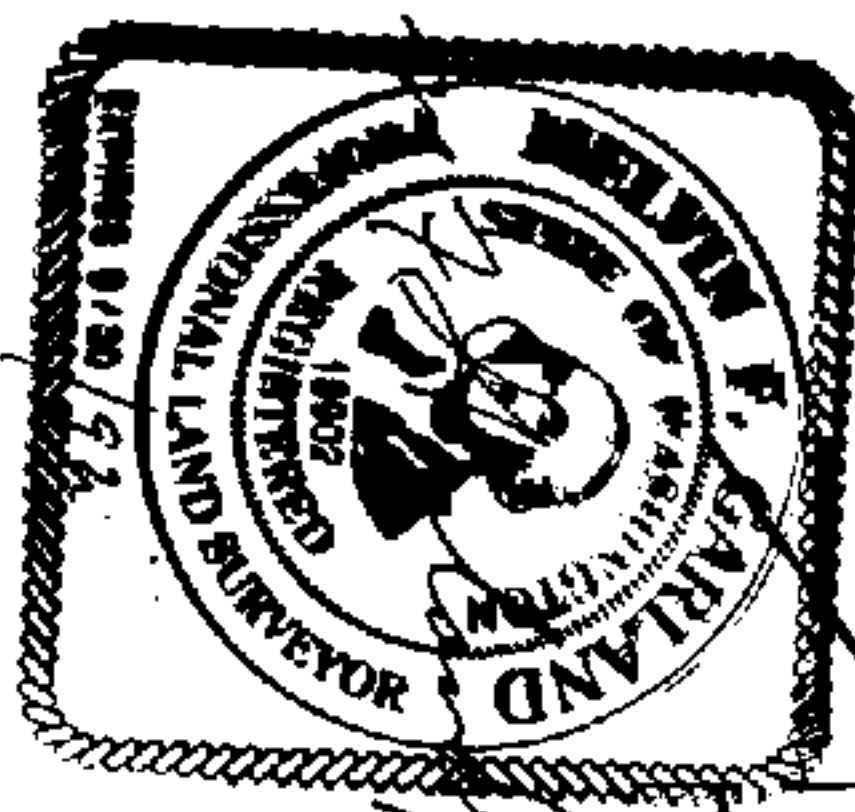
CURVE TABLE

CURVE	RADIUS	LENGTH	DELTA	CURVE	RADIUS	LENGTH	DELTA
C101	50.00'	37.12'	42° 32' 03"	C135	243.79'	5.60'	02° 43' 56"
C141	50.00'	41.15'	47° 09' 23"	C135	575.00'	24.80'	04° 05' 42"
C142	50.00'	110.15'	126° 13' 23"				
C143	50.00'	58.00'	110.15'				
C144	50.00'	53.66'	08° 11' 58"				
C145	50.00'	53.66'	08° 11' 58"				
C146	50.00'	53.66'	08° 11' 58"				
C147	50.00'	53.66'	08° 11' 58"				
C148	50.00'	53.66'	08° 11' 58"				
C149	50.00'	53.66'	08° 11' 58"				
C150	50.00'	53.66'	08° 11' 58"				
C151	50.00'	53.66'	08° 11' 58"				
C152	50.00'	53.66'	08° 11' 58"				
C153	50.00'	53.66'	08° 11' 58"				
C154	50.00'	53.66'	08° 11' 58"				
C155	50.00'	53.66'	08° 11' 58"				
C156	50.00'	53.66'	08° 11' 58"				
C157	50.00'	53.66'	08° 11' 58"				
C158	50.00'	53.66'	08° 11' 58"				
C159	50.00'	53.66'	08° 11' 58"				
C160	50.00'	53.66'	08° 11' 58"				

SEE SHEET 7 OF 10

LINE TABLE

LINE	DIRECTION	DISTANCE
L20	N 04° 38' 37" E	19.98'
L34	N 85° 21' 23" W	40.00'



PAC-TECH ENGINEERING, INC.
Engineers / Planners / Surveyors

945-7113
PERCE COUNTY
6100 Southcenter Blvd
Seattle, WA 98148
Fax # 243-7108

473-4481
TACOMA
2807 South 35th
Suite 200
Tacoma, WA 98409
Fax # 474-5871

577-2053
BREMERTON
3721 Killebrew Way
Bremerton, WA 98512
Fax # 577-2293

PUNINGULA L.L. NO. 1446

PUNINGULA L.L. NO. 1446

S 00° 17' 17" W

Original

BR0752PG2885

JOB NO. 15733

9203050191

